

Hampshire Water Transfer and Water Recycling Project Environmental Statement – Figure 19.4 Nitrate Vulnerable Zones and Urban Waste Water Treatment Directive rivers and catchments

VOLUME NUMBER: 6

PLANNING INSPECTORATE SCHEME NUMBER: WA010002

APPLICATION DOCUMENT REFERENCE: 6.3

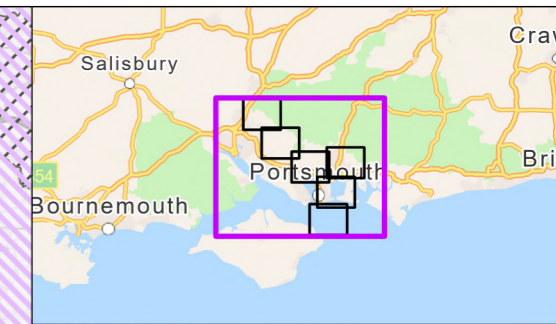
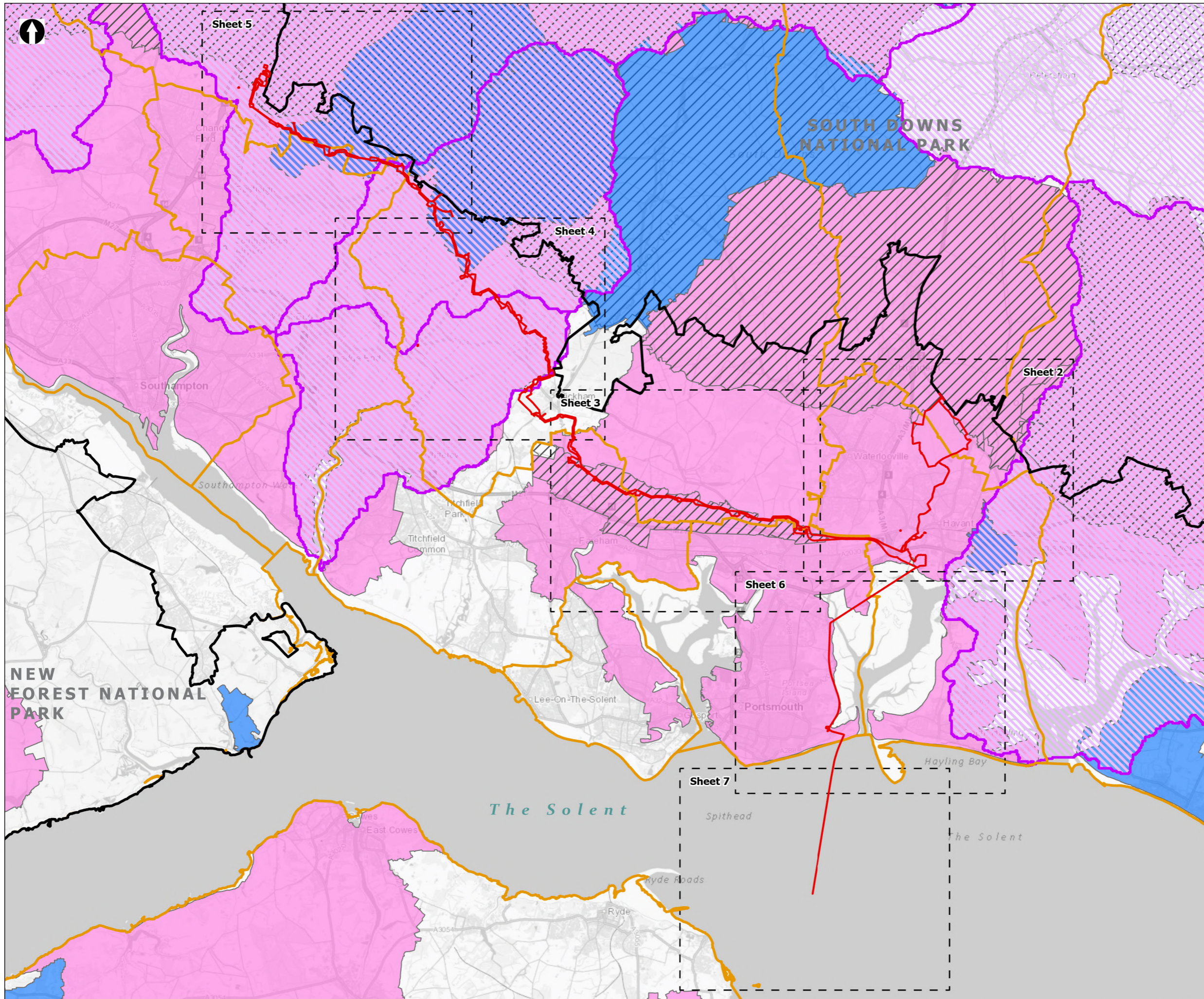
APFP REGULATION: 5(2)(a)

May 2026

Version 0



from
**Southern
Water** 



- Order Limits
 - Sheet Extent Boxes 1:30K
 - National Parks
 - Local planning authorities
 - Urban WW Treatment Directive Catchments
- Nitrate Vulnerable Zones**
- Eutrophic Water
 - Groundwater
 - Surface Water

Coordinate system: British National Grid; Datum: OSGB 1936
 Data sources: © Crown copyright and database rights 2026 Ordnance Survey 0100031673. Contains OS data © Crown Copyright and database right 2020, Sources: Esri, TomTom, Garmin, FAO, NOAA, USGS, © OpenStreetMap contributors, and the GIS User Community

PROJECT TITLE
 Hampshire Water Transfer and Water Recycling Project

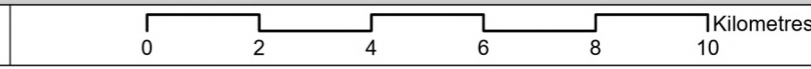


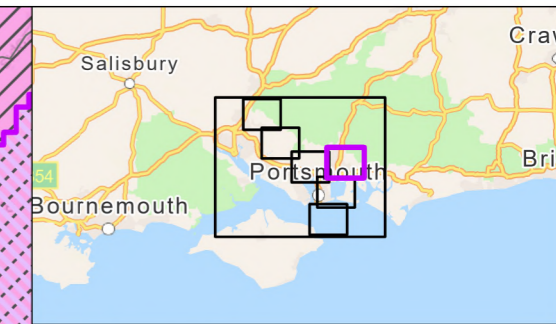
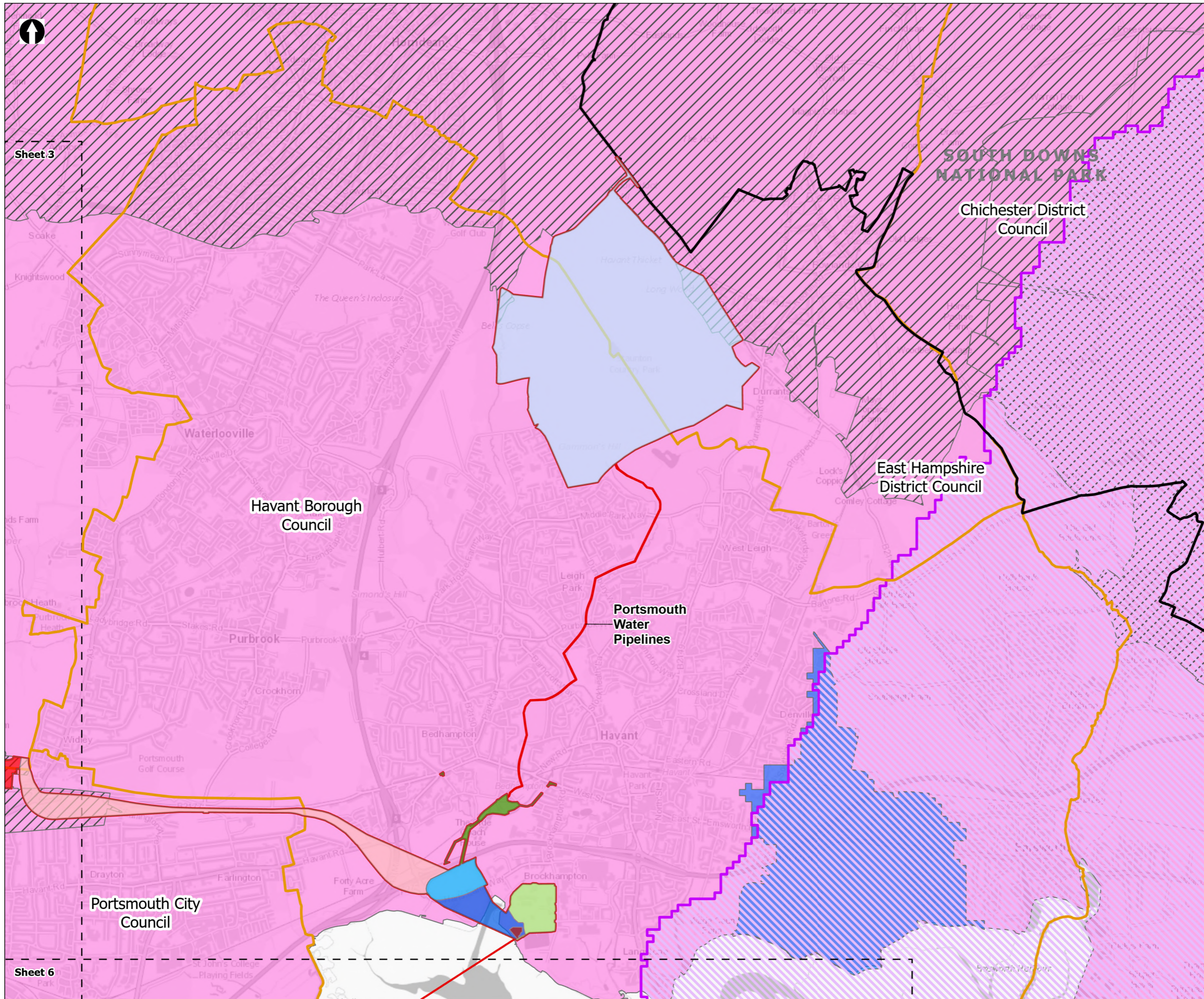
Figure 19.4
 Nitrate Vulnerable Zones & Urban Waste Water Treatment Directive rivers and catchments
 Sheet 1 of 7

Drawn DL	GIS Checked MW	Checked MP	Approved AK
Scale at A3 1:135,000	Status Final	Revision 05	Security STD

Drawing Number
PC5223-RHD-ES-ZZ-D-Z-0084

© Southern Water 2026
 This document is issued for the party which commissioned it and for specific purposes connected with the captioned project only. It should not be relied upon by any other party or used for any other purpose.
 We accept no responsibility for the consequences of this document being relied upon by any other party, or being used for any other purpose, or containing any error or omission which is due to an error or omission in data supplied to us by other parties.





- Order Limits
 - Sheet Extent Boxes 1:30K
 - National Parks
 - Local planning authorities
 - Urban WW Treatment Directive Catchments
- Nitrate Vulnerable Zones**
- Eutrophic Water
 - Groundwater
 - Surface Water
- Proposed Development Components**
- Budds Farm Wastewater Treatment Works
 - Limits of Deviation for Budds Farm Pumping Station
 - Pipelines between the Water Recycling Plant site and Bedhampton Springs
 - Water Recycling Plant site
 - Pipelines between Budds Farm Wastewater Treatment Works and the Water Recycling Plant site
 - Havant Thicket Reservoir
- Pipeline between the Water Recycling Plant site and Otterbourne Water Supply Works**
- Section D: The Water Recycling Plant site to Portsdown Hill
 - Section E: Portsdown Hill to Boarhunt

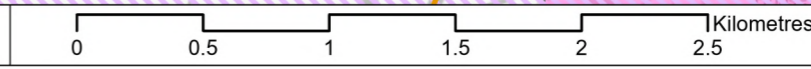
Coordinate system: British National Grid; Datum: OSGB 1936
 Data sources: © Crown copyright and database rights 2026 Ordnance Survey 0100031673. Contains OS data © Crown Copyright and database right 2020, Sources: Esri, TomTom, Garmin, FAO, NOAA, USGS, © OpenStreetMap contributors, and the GIS User Community

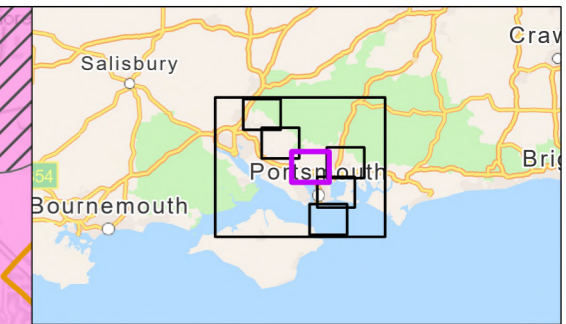
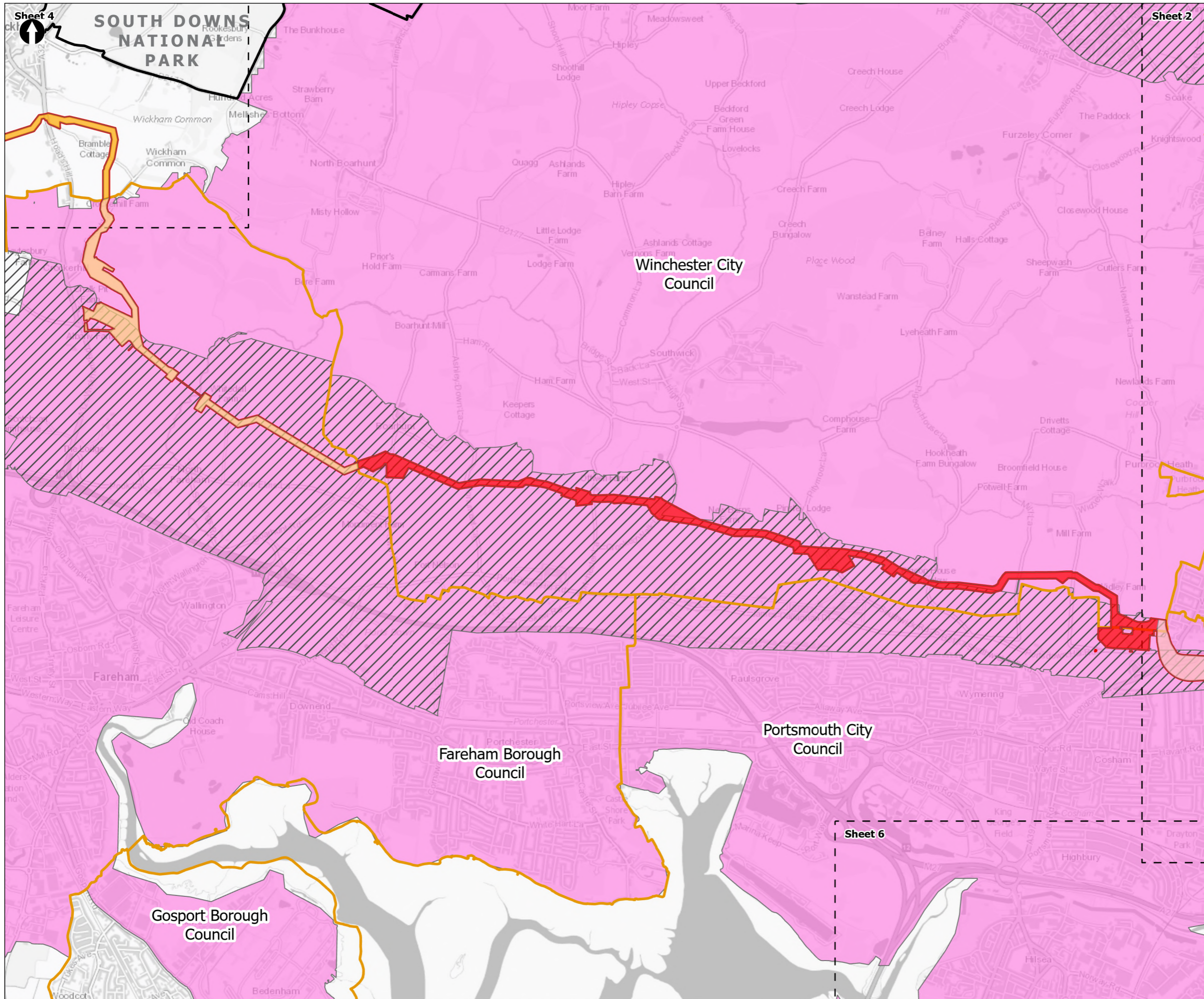
PROJECT TITLE
 Hampshire Water Transfer and Water Recycling Project



Figure 19.4
 Nitrate Vulnerable Zones & Urban Waste Water Treatment Directive rivers and catchments
 Sheet 2 of 7

Drawn DL	GIS Checked MW	Checked MP	Approved AK
Scale at A3 1:30,000	Status Final	Revision 05	Security STD





Order Limits

Sheet Extent Boxes 1:30K

National Parks

Local planning authorities

Nitrates Vulnerable Zones

Eutrophic Water

Groundwater

Pipeline between the Water Recycling Plant site and Otterbourne Water Supply Works

Section D: The Water Recycling Plant site to Portsdown Hill

Section E: Portsdown Hill to Boarhunt

Section F: Boarhunt to Crockerhill

Section G: Crockerhill to Wickham

Coordinate system: British National Grid; Datum: OSGB 1936
 Data sources: © Crown copyright and database rights 2026 Ordnance Survey 0100031673. Contains OS data © Crown Copyright and database right 2020, Sources: Esri, TomTom, Garmin, FAO, NOAA, USGS, © OpenStreetMap contributors, and the GIS User Community

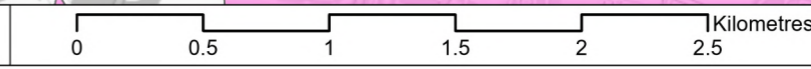
PROJECT TITLE
 Hampshire Water Transfer and Water Recycling Project

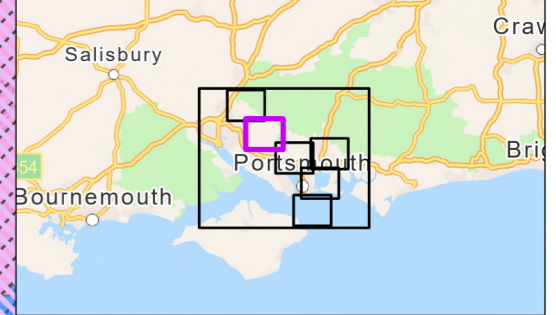
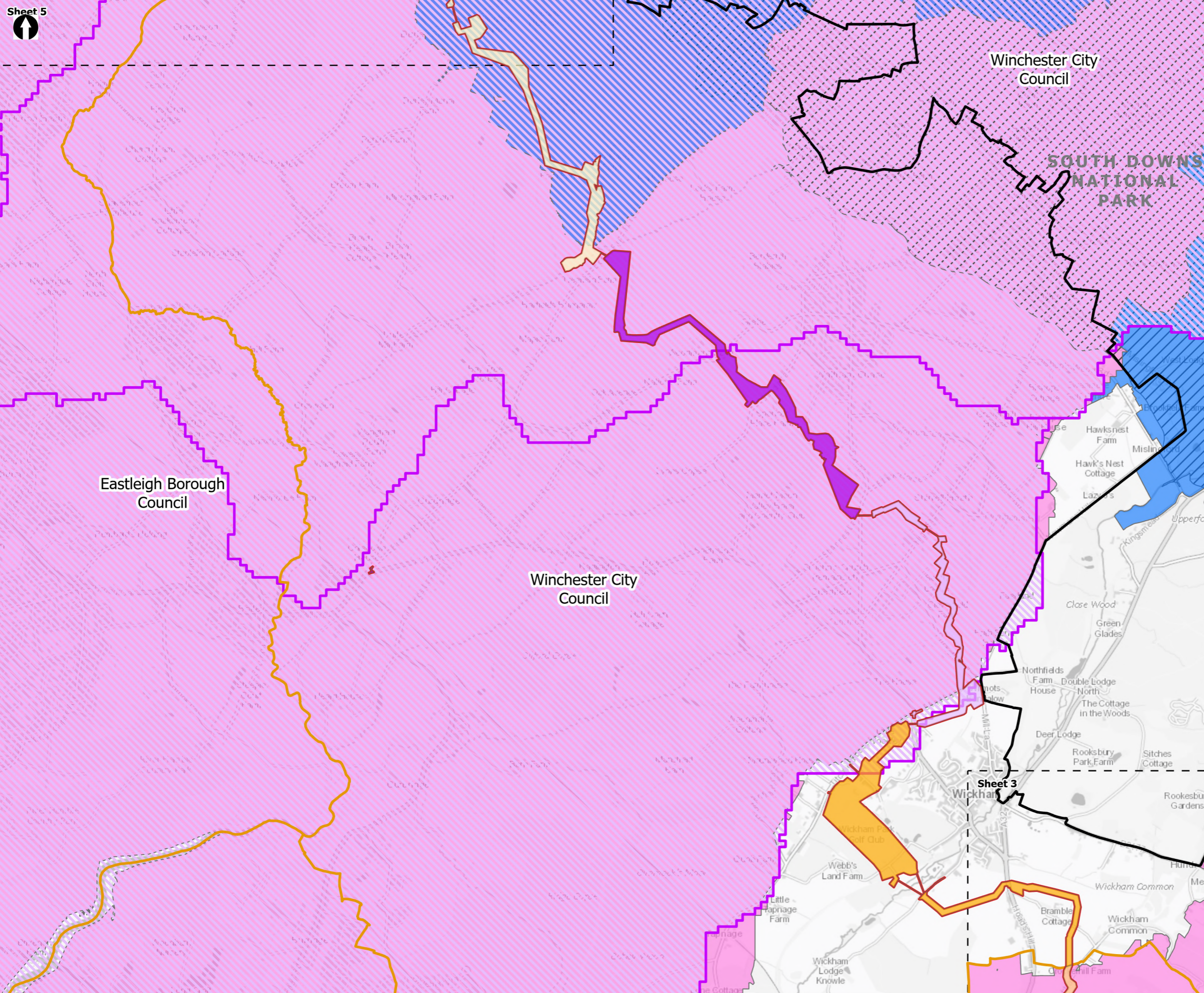


Figure 19.4
 Nitrates Vulnerable Zones & Urban Waste Water Treatment Directive rivers and catchments
 Sheet 3 of 7

Drawn DL	GIS Checked MW	Checked MP	Approved AK
Scale at A3 1:30,000	Status Final	Revision 05	Security STD

Drawing Number
PC5223-RHD-ES-ZZ-D-Z-0084





- Order Limits
 - Sheet Extent Boxes 1:30K
 - National Parks
 - Local planning authorities
 - Urban WW Treatment Directive Catchments
- Nitrate Vulnerable Zones**
- Eutrophic Water
 - Groundwater
 - Surface Water
- Pipeline between the Water Recycling Plant site and Otterbourne Water Supply Works**
- Section F: Boarhunt to Crockerhill
 - Section G: Crockerhill to Wickham
 - Section H: Wickham to Shedfield
 - Section J: Shedfield to the River Hamble
 - Section K: The River Hamble to Lower Upham

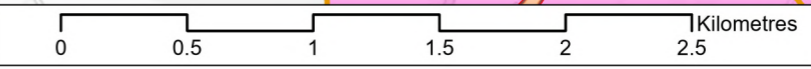
Coordinate system: British National Grid; Datum: OSGB 1936
 Data sources: © Crown copyright and database rights 2026 Ordnance Survey 0100031673. Contains OS data © Crown Copyright and database right 2020. Sources: Esri, TomTom, Garmin, FAO, NOAA, USGS, © OpenStreetMap contributors, and the GIS User Community

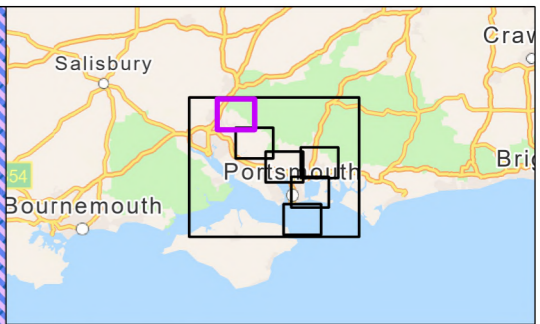
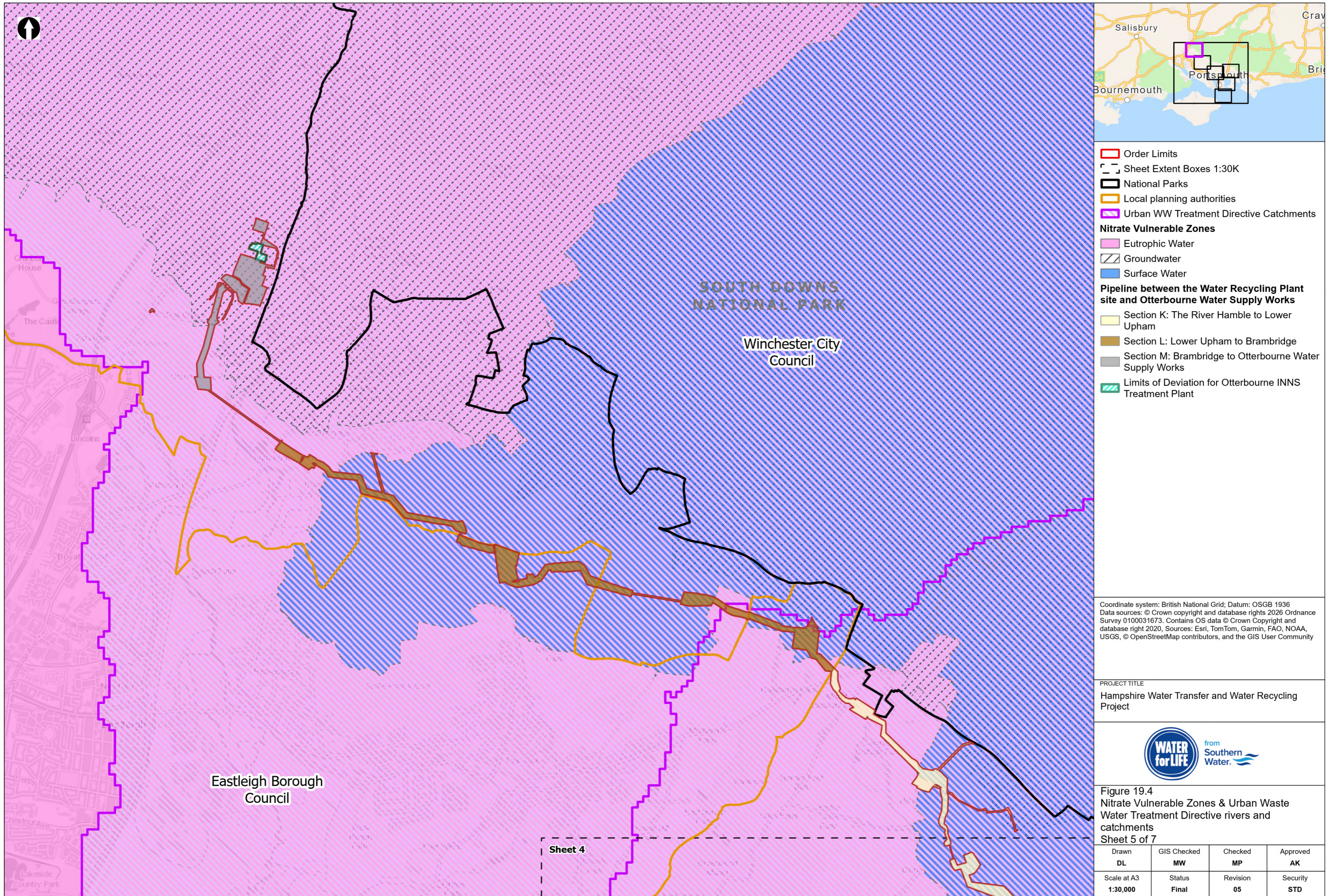
PROJECT TITLE
 Hampshire Water Transfer and Water Recycling Project



Figure 19.4
 Nitrate Vulnerable Zones & Urban Waste Water Treatment Directive rivers and catchments
 Sheet 4 of 7

Drawn DL	GIS Checked MW	Checked MP	Approved AK
Scale at A3 1:30,000	Status Final	Revision 05	Security STD





- Order Limits
- Sheet Extent Boxes 1:30K
- National Parks
- Local planning authorities
- Urban WW Treatment Directive Catchments
- Nitrate Vulnerable Zones**
- Eutrophic Water
- Groundwater
- Surface Water
- Pipeline between the Water Recycling Plant site and Otterbourne Water Supply Works**
- Section K: The River Hamble to Lower Upham
- Section L: Lower Upham to Brambridge
- Section M: Brambridge to Otterbourne Water Supply Works
- Limits of Deviation for Otterbourne INNS Treatment Plant

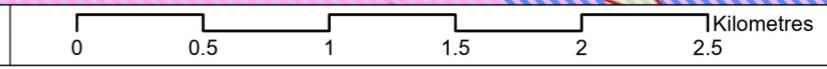
Coordinate system: British National Grid; Datum: OSGB 1936
 Data sources: © Crown copyright and database rights 2026 Ordnance Survey 0100031673. Contains OS data © Crown Copyright and database right 2020. Sources: Esri, TomTom, Garmin, FAO, NOAA, USGS, © OpenStreetMap contributors, and the GIS User Community

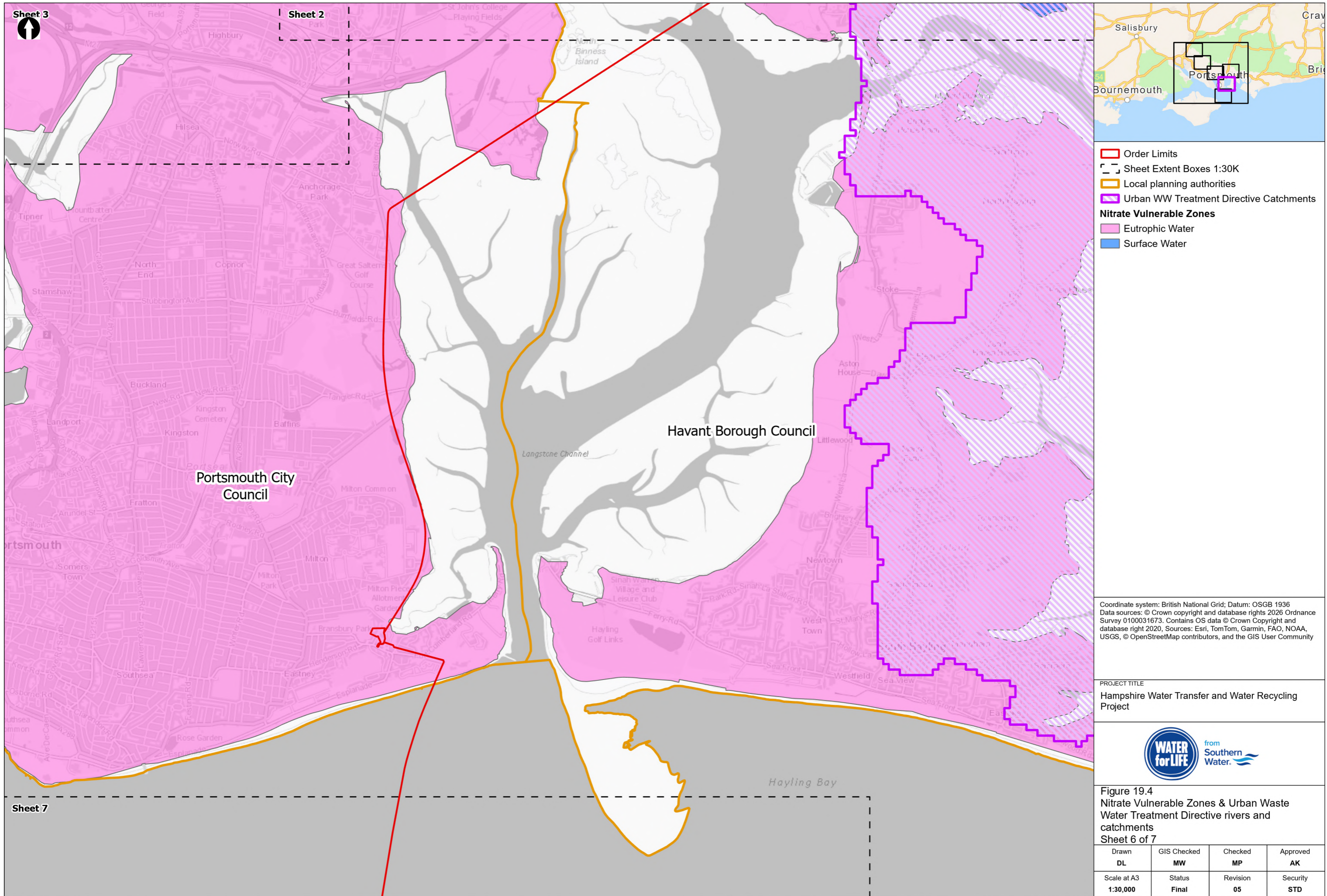
PROJECT TITLE
 Hampshire Water Transfer and Water Recycling Project



Figure 19.4
 Nitrate Vulnerable Zones & Urban Waste Water Treatment Directive rivers and catchments
 Sheet 5 of 7

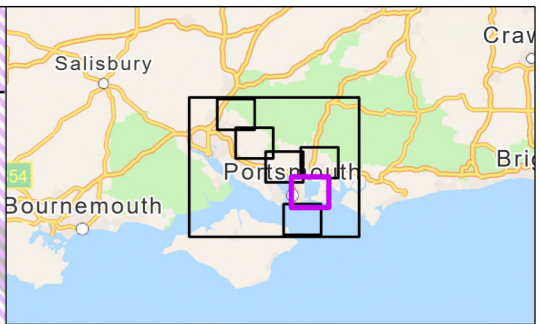
Drawn DL	GIS Checked MW	Checked MP	Approved AK
Scale at A3 1:30,000	Status Final	Revision 05	Security STD





Sheet 3

Sheet 2



Order Limits
 Sheet Extent Boxes 1:30K
 Local planning authorities
 Urban WW Treatment Directive Catchments

Nitrate Vulnerable Zones
 Eutrophic Water
 Surface Water

Coordinate system: British National Grid; Datum: OSGB 1936
 Data sources: © Crown copyright and database rights 2026 Ordnance Survey 0100031673. Contains OS data © Crown Copyright and database right 2020. Sources: Esri, TomTom, Garmin, FAO, NOAA, USGS, © OpenStreetMap contributors, and the GIS User Community

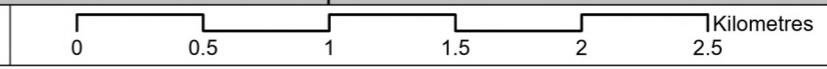
PROJECT TITLE
 Hampshire Water Transfer and Water Recycling Project



Figure 19.4
 Nitrate Vulnerable Zones & Urban Waste Water Treatment Directive rivers and catchments
 Sheet 6 of 7

Drawn DL	GIS Checked MW	Checked MP	Approved AK
Scale at A3 1:30,000	Status Final	Revision 05	Security STD

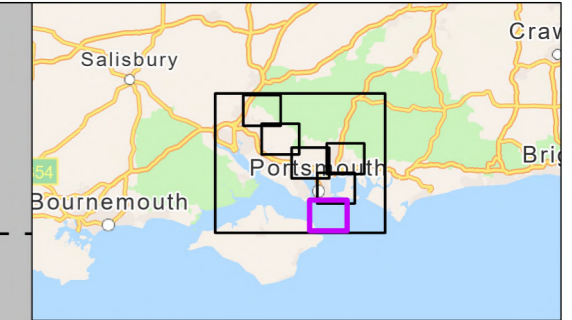
Sheet 7



Drawing Number
 PC5223-RHD-ES-ZZ-D-Z-0084



Sheet 6



Order Limits

Sheet Extent Boxes 1:30K

Local planning authorities

Nitrate Vulnerable Zones

Eutrophic Water

Coordinate system: British National Grid; Datum: OSGB 1936
 Data sources: © Crown copyright and database rights 2026 Ordnance Survey 0100031673. Contains OS data © Crown Copyright and database right 2020, Sources: Esri, TomTom, Garmin, FAO, NOAA, USGS, © OpenStreetMap contributors, and the GIS User Community

PROJECT TITLE
 Hampshire Water Transfer and Water Recycling Project



Figure 19.4
 Nitrate Vulnerable Zones & Urban Waste Water Treatment Directive rivers and catchments
 Sheet 7 of 7

Drawn DL	GIS Checked MW	Checked MP	Approved AK
Scale at A3 1:30,000	Status Final	Revision 05	Security STD

Drawing Number
PC5223-RHD-ES-ZZ-D-Z-0084



Isle of Wight Council

